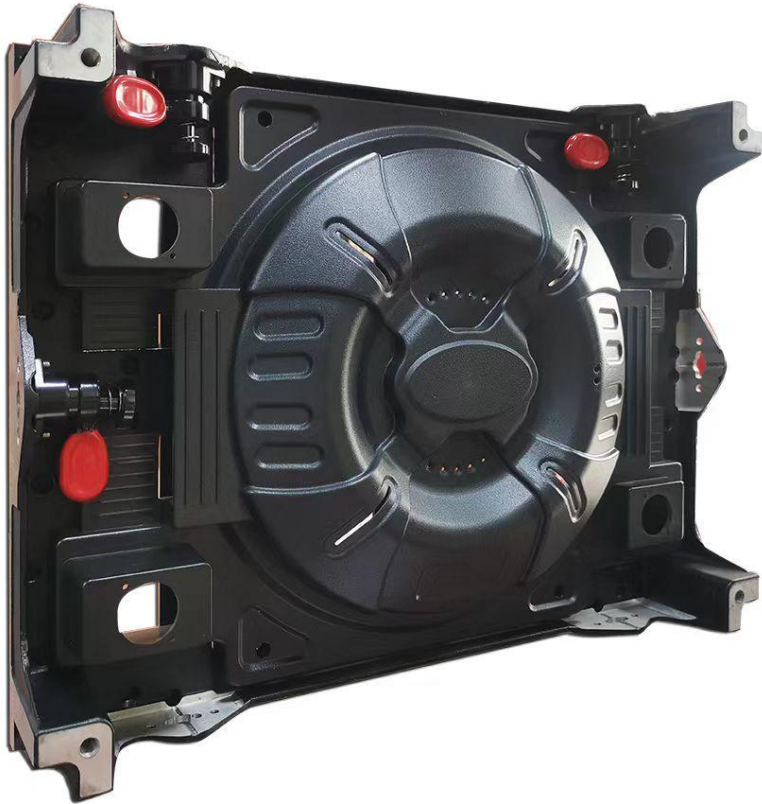


# IR O Series

P1.25 P1.667 (400x300mm)



## PRODUCT SPECIFICATIONS

Item	P1.25	P1.667
Pixel pitch	1.25mm	1.667mm
Pixel density	640000 dots/m <sup>2</sup>	360000 dots/m <sup>2</sup>
Module size	200x150mm	
LED package	SMD1010	SMD1010
Module resolution(pixels)	160x120	120x90
Module arrangement per cabinet	2x2	
Cabinet dimension	400x300x70mm	
Cabinet weight (including module)	7.2kg	
Cabinet resolution(pixels)	320x240	240x180
Maintenance	Full front service	
System backup	Support	
White balance brightness	500-800cd/m <sup>2</sup>	
Pixel-level calibration	Support	
Color temperature	6500K (adjustable)	
Refresh rate	3840Hz	
Viewing angle	160 (V/H)	
Brightness uniformity	>99%	
Grayscale level	16bits	
Contrast ratio	5000:1	
Scanning mode	1/64	1/52
Working voltage(input)	110-240V, 50/60Hz	
Max./Avg.Power consumption	500W/m <sup>2</sup> /165-260W/m <sup>2</sup>	
Storage temperature&humidity (RH)	-20℃-50℃&35-75%	
Working temperature&humidity (RH)	-20℃-50℃&35-75%	
IP ratings	IP45	
Screen temperature rise	≤5℃	
Installation	On-wall/recessed/pedestal/suspended/stacked install	
Signal output	HDMI/VGA/DVI/DP	
Certification	RoHS/FCC/CE	